

ERASMUS WELCOMING HANDBOOK

Cyprus
2025-2026

Table of Contents

- 1 History and Cities of Cyprus
- 2 Before you arrive
 - Fall Semester
 - Spring Semester
- 3 When you arrive
 - Larnaca Airport - Limassol
 - Paphos Airport - Limassol
- 4 During your stay
 - Entertainment
 - Tourist Attractions
 - University Life
- 5 Additional Information

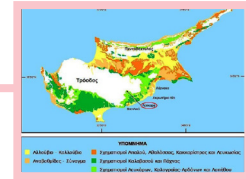


History and Cities of Cyprus

Everything you need to know about Cyprus

The formation of Cyprus

Cyprus was formed as a result of a series of unique events which has made the island a geological show case. About 90 million years ago, Cyprus was part of the bottom of a deep ocean, called Tethys. Tectonic movements at that time resulted in the collision of the African with the Eurasian plate, ultimately giving birth to the island.



Chalcolithic Period

There is an internal evolution that is formalised around 3500 BC with appearance of the first metalwork and the beginning of the Chalcolithic (copper and stone) period that lasted until about 2500/2300 BC. Very few chisels, hooks and jewelenes of pure copper have survived, but in one example there is a minimal presence of tin, something which may support contact with Asia Minor, where copper-working was established earlier.



Iron Age (11th Century BC)

In the ensuing Early Iron Age Cyprus becomes predominantly Greek. Pottery shapes and decoration show a marked Aegean inspiration although Oriental ideas creep in from time to time. Pottery types also appear from other Mediterranean cultures as evidenced from in archaeological recovery on Cyprus of pottery from Cydonia, a powerful urban center of ancient Crete



4th-10th Century AD

The cities of Cyprus were destroyed by two successive earthquakes in 332 and 342 AD and this marked the end of an era and at the same time the beginning of a new one, very much connected with modern life in Cyprus. The main event in Cyprus in this period was the spreading of the Christian faith.



1878-1960

In 1878, as a result of the Cyprus Convention, the United Kingdom received as a protectorate the island of Cyprus from the Ottoman Empire in exchange for United Kingdom's military support to the Ottoman Empire should Russia attempt to take possession of territories of the Ottomans in Asia. Cyprus was part of the British Empire from 1914 under military occupation to 1925 and a Crown colony from 1925 to 1960.



1960-present

In August 16, 1960 Cyprus gained its independence from the United Kingdom, after the long anti-British campaign by the Greek Cypriot EOKA. In July 1974, the President was overthrown by the 1974 Cypriot coup d' état carried out by Greece, which was under Greek military junta rule. In 1974, with a two-stage offensive, Turkish troops took control of 38% of the island and 200,000 Greek Cypriots fled the northern areas which were under occupation

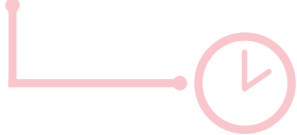


Before you arrive

Fall Semester
Spring Semester

Fall Semester

Semester Period



September 2nd - December 5th
(6-23 of December, Exam Period)

Weather



In autumn, the weather is mostly sunny. It only starts to get colder in late autumn. The temperature drops significantly at night.

What to pack



Swimsuit, lightweight and warm clothes. Bring also a jacket and coat because it will get colder.

Other Information



You can go to the beach from August until mid-October! It is better to visit the mountains from September until December.

Spring Semester

Semester Period



January 12th -April 30th
(2-24 of May, Exam Period)

Weather



Winter in Cyprus is mild and relatively rainy. By March, the weather gets warmer and remains quite warm throughout spring. During the Summer, it is extremely sunny, hot and dry!

What to pack



You should bring warm clothes (for the cold winter days) and an umbrella, scarf, gloves. For the Spring period bring some mid-weight and some lightweight clothes. For the Summer months bring a swimsuit, sunglasses, sunscreen and a hat.

Other Information



You can visit the beach from early May until August. You should visit the mountains from January until March.



When you arrive

Larnaca Airport-Limassol
Paphos Airport-Limassol



Larnaca Airport-Limassol



Arrival at Larnaca Airport



Public Bus Services



Taxi Services



Limassol Airport Express Shuttles



From: Airport
To: Intercity Bus Station
Bus no. 425
Price: 2 euros
Duration: 20 minutes



Intercity Bus Station
Finikoudes

From: Intercity Bus Station Finikoudes
To: Limassol
Price: 5 euros
Duration: 1 hour 30 minutes



Agia Napa Church

You can take a bus or taxi to your final destination



From: Airport
To: Limassol
Price: around 65-70 euros
Duration: 1 hour



From: Airport
To: Limassol Airport Express Station
Price: 10 euros
Duration: 1 hour 30 minutes



Limassol Airport Express Station

From the Limassol Airport Express Station you can take another bus or taxi to your final destination



Final Destination

Paphos Airport-Limassol



Arrival at Paphos Airport



Public Bus Services



Taxi Services



Limassol Airport Express Shuttles



From: Airport
To: Intercity Bus Station
Bus no. 613
Price: 2 euros
Duration: 20 minutes



From: Airport
To: Limassol
Price: around 80-90 euros
Duration: 1 hour



From: Airport
To: Limassol Airport Express Station
Price: 10 euros
Duration: 1 hour 15 minutes



Intercity Bus Station
Karavella

From: Intercity Bus Station Karavella
To: Limassol
Price: 5 euros
Duration: 1 hour 15 minutes



Old Hospital Bus
Station

You can take a bus or taxi to your final destination



Limassol Airport Express Station

From the Limassol Airport Express Station you can take another bus or taxi to your final destination



Final Destination



During your stay

Entertainment
Tourist Attractions
University Life

Entertainment

Cafes

Starbucks Anexartias

<https://share.google/Gj1UbH6mPOiiUAnAg>

La Croissanterie Anexartias

<https://share.google/S6XQ7nVjdFEtcKLqf>

Clock Café Anexartias

<https://share.google/v7rg9RrYh76rI7kLG>

Stories Anexartias

<https://share.google/asl8hwKWK8il7Vwd3>

Nuovo

<https://share.google/3SkbaajcAf1Hplh0i>

Dose Caffè

<https://share.google/TwdUTYpkPCWq7pktq>

Wagmi Coffee

<https://share.google/815uT8ODbbdwXiESh>

Food

Limassol Agora

<https://share.google/rjp4IOzIRQEsB5HiZ>

Per Metro Pizza

<https://share.google/jS4JugPbl1OWw4bvY>

Sherlock's home bar

<https://share.google/EZ9WbSo1OmX9IS0JA>

Pokeloha

<https://share.google/yVuc7Xhtgilub1rNV>

Thymari

<https://share.google/yHLWdipGyBgXmQbZn>

TGI Fridays Marina

<https://share.google/CGn2NbVeCawhn8MX9>

Epsilon Resto Bar

<https://share.google/r4UiDMUG2urJtCTXg>

Library

<https://share.google/plukLzc2nVx7T9e3b>

Ousia Lounge

<https://share.google/xnDDPNexfq4Dh4NyK>

Curly Wolf

<https://share.google/WwswbrYUPfer7QajA>

Bars & Nightlife

Sherlock's home bar

<https://share.google/EZ9WbSo1OmX9IS0JA>

Hustlers Rock Bar

<https://share.google/S2Yc9RlyjoCrHjLZu>

Blue Apple

<https://share.google/Jw51mAnPlgtjW8JV7>

Coa

<https://share.google/r2AdqwrquMpTEXOyU>

Da Vinci

<https://share.google/dAP6x4WLUJQhSwQ34>

Boho

<https://share.google/ry3feu1blm3w532DM>

Gazebo Mare

<https://share.google/kuoBefVInIzYzIrEJ>

Guest bar

<https://share.google/nqgfN2jWdRvuOCHnt>

Tria Poulakia

<https://share.google/2dgmw7J8UrY423Ckg>

Cinema

<https://share.google/qWuBZhrjmlFE4qGXf>

Library

<https://share.google/plukLzc2nVx7T9e3b>

Tourist Attractions

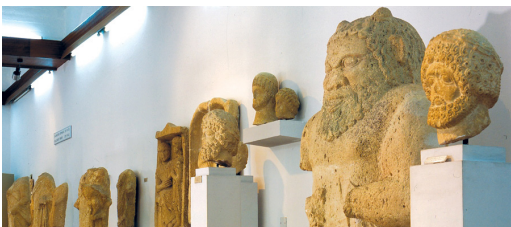
Kourion Archaeological Site

Kourion was an important ancient city-state on the southwestern coast of Cyprus. In the twelfth century BCE, after the collapse of the Mycenaean palaces, Greek settlers from Argos arrived on this site. In the seventeenth century, Kourion suffered from five heavy earthquakes, but the city was partly rebuilt.



Kourion Archaeological Site

Modest, circa-1948 archaeological museum showcasing relics, statuary & art from old settlements.



Limassol Castle

The medieval Limassol Castle is situated near the old harbour in the heart of the historical centre of the city of Limassol. The castle as it appears today is a structure rebuilt circa 1590 under the period of Ottoman rule.



Kourion Beach

Kourion Beach is situated in the area of the Episkopi Bay, about 17 kilometres from the Limassol district. It received its name from the Ancient Kourion Theatre that is located at the peak of the mountain above the sea. The particular sea has large amounts of salt, and this makes it cleaner and more natural.



Univeristy Life

Students can do so much stuff while studying at the university

University Gym

The gym is equipped with treadmills, stationary bikes and other organs. With the help of an experienced trainer build your own program. During afternoons/evenings aerobics classes are offered (see below).

University Sports Centre, V.Makedonos str.
(Zappeion), at Hero Square.

For more information:

www.cut.ac.cy/students/sports/activities-schedule/gym-and-aerobics/



Student Clubs

Student years are a very important milestone in your life. Being a student does not only imply reading and taking examinations. Being a student also entails creation, freedom of thought and activities. Do not let your student years pass by without getting involved in such activities.

There are student clubs at the University that cover a wide range of interests in culture, arts, music, dance, sports and entertainment. The ability of engagement in extra-university interests offers rich experiences and unforgettable memories.

For more information:

www.cut.ac.cy/students/student-life/clubs-and-societies/reg-clubs/



CUTing edge

The CUTing Edge aims to provide an inspirational place where people can relax and embrace technology, become innovators and present their work to the worldwide community. It also aims to promote entrepreneurship for young people, introduce various possibilities that are available out there and prepare them for competitive business and working environment.

For more information:

<http://cutingedge.cut.ac.cy/>



The CUTing Edge aims to introduce various aspects of American culture and promote the English language and study possibilities that the US has to offer. The CUTing Edge team is composed of dedicated people from different backgrounds who are committed to providing superior service to visitors and members.



Additional Information



Emergency Contacts



112 (European Emergency Number): Use 112 for any life-threatening situation (If you are using a non-cypriot mobile phone you may need to use the relevant code for dialing CY, which is 00357)



Limassol Old General Hospital: (00 357) 25 305 333
Limassol New General Hospital: (00 357) 25 801 100
24-hour Pharmacies: (00 357) 90 90 1415

Useful Information



DRIVING ON THE LEFT

Like in the UK, in Cyprus, you drive on the left hand side of the road. What's more, because of the influence of the UK in Cyprus, many of the road signs are similar, as are the traffic lights system. For non-UK Incoming Staff please be careful while crossing the road.



ELECTRICITY IN CYPRUS

Electricity in Cyprus is the same as the UK - 240 volts, with a 3-pin electrical plug socket. Please bring an adaptor with you if your plug is not a 3-pin



SMOKING BAN

There is a smoking ban in Cyprus, which means that you cannot smoke inside buildings. Most hotels and restaurants have designated smoking areas.



TIPPING

Tipping is generally at the discretion of the customer, however, it is usual to leave a 10% tip for taxi drivers and in restaurants. It is not customary to tip bar staff. With regard to hotels, it is normal to leave 1 to 2 euros a day.



BANKNOTES

As in many European countries, our currency is Euro.

Welcome to Limassol

