

GROUP 4

Orestis
Andreas
Cesare
Claudio
Ivan
Stefan
Panayiotis

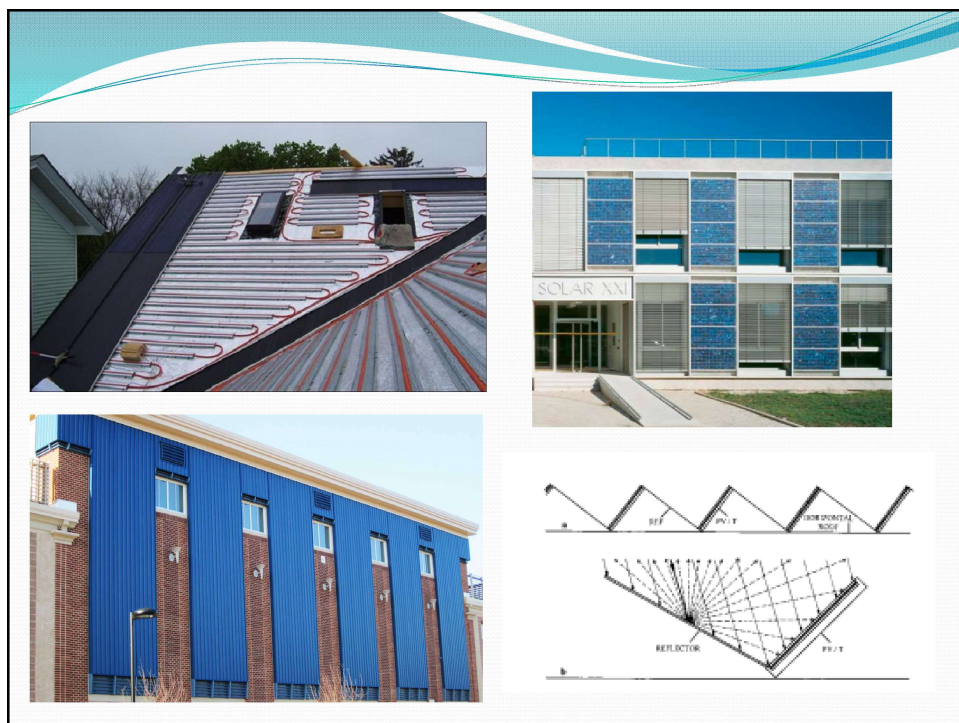
Building Design criteria

- Built/green area ratio : 0.5
- Building regulations
- Maximum insolation – minimum south side shading
- Minimum collector area: 8000 sqm
- Achieved: 13000 sqm
- Apartment dimensions: 10x10x3 m for 4 persons

Achievements

- Appartements: 500
- Buildings: 8
- Built/ free space ratio: $6000/47000=0.127$
- South surface: 10200 sqm
- Roof surface: 6000 sqm
- Collector surface area: $(10200 \times 0.7)+6000 = 13140$ sqm
- Insolated south surface + roof at 12:00 : 13070 sqm
- Insolated south surface +roof at 15:00 : 9200 sqm
- Insolated south surface +roof at 09:00 : 9722.8 sqm

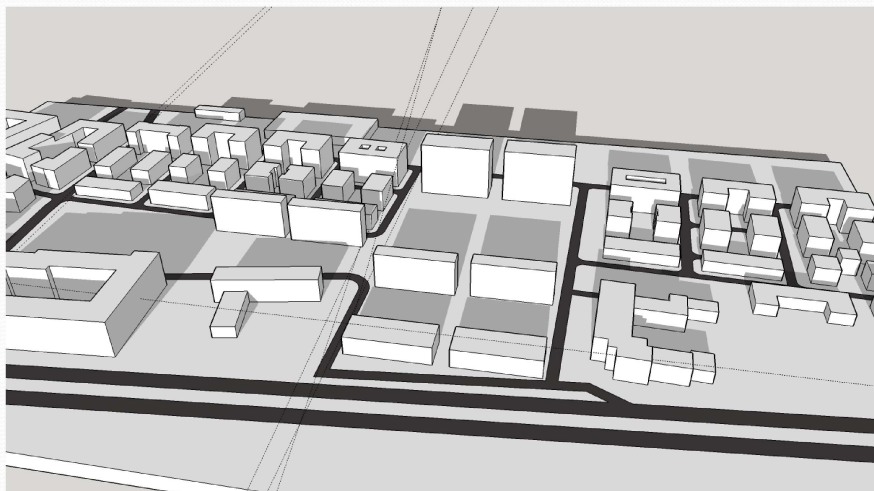




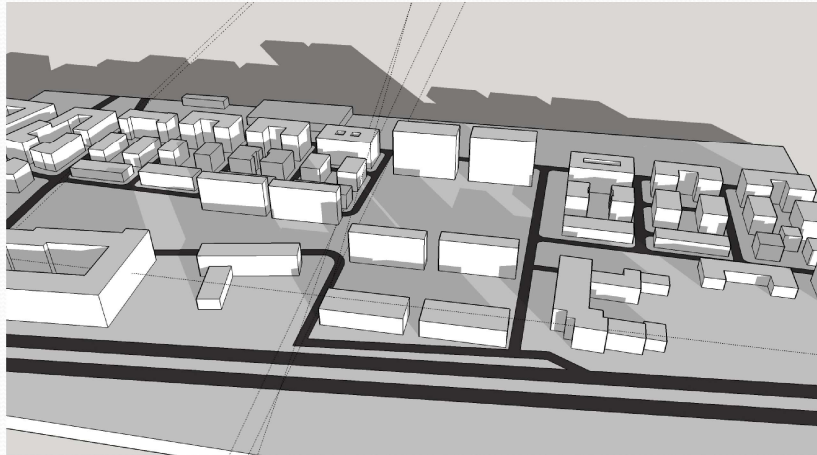
Top view



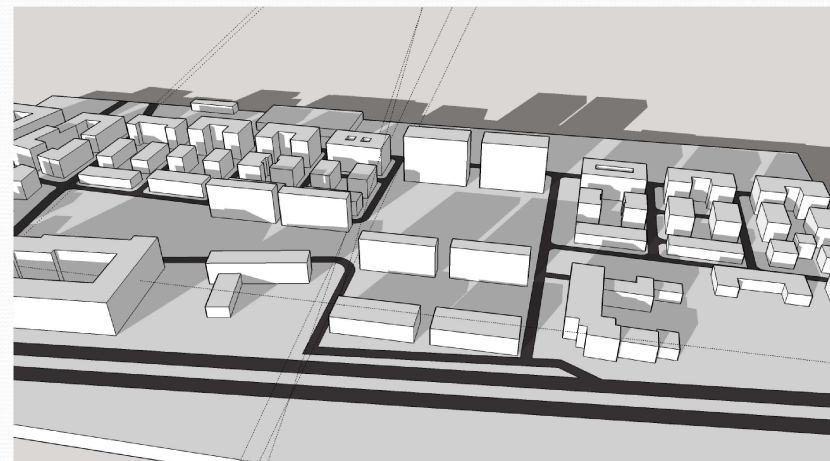
12:00



9:00



3:00





Thank you!