

## Introduction

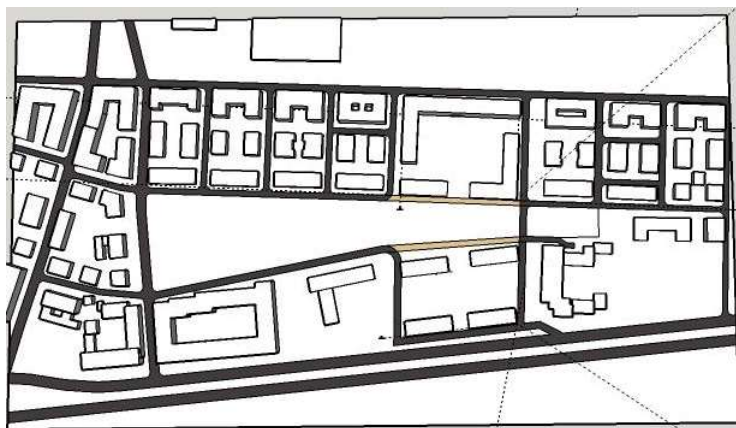
2000 users  
100 m<sup>2</sup> per apartment  
500 apartments  
4 people per 1 apartment  
8 000 m<sup>2</sup> surface of STS

## Assumptions

- ▶ Maximize surface of south elevations
- ▶ Leave unharmed as much space of park area as its possible
- ▶ Plan the best location for buildings which contains 500 flats for 2000 people

- ▶ Living area: 56 700 m<sup>2</sup>
- ▶ Area of East, West and South facades: 9 500 m<sup>2</sup>
- ▶ Area appropriate for solar systems: 8 000 m<sup>2</sup>

## Site plan



## Reference building

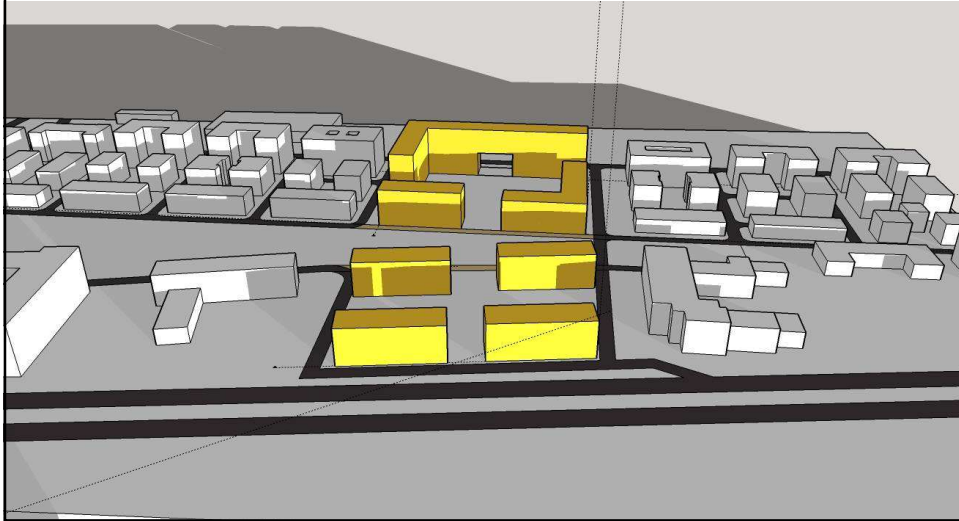


## Reference STS



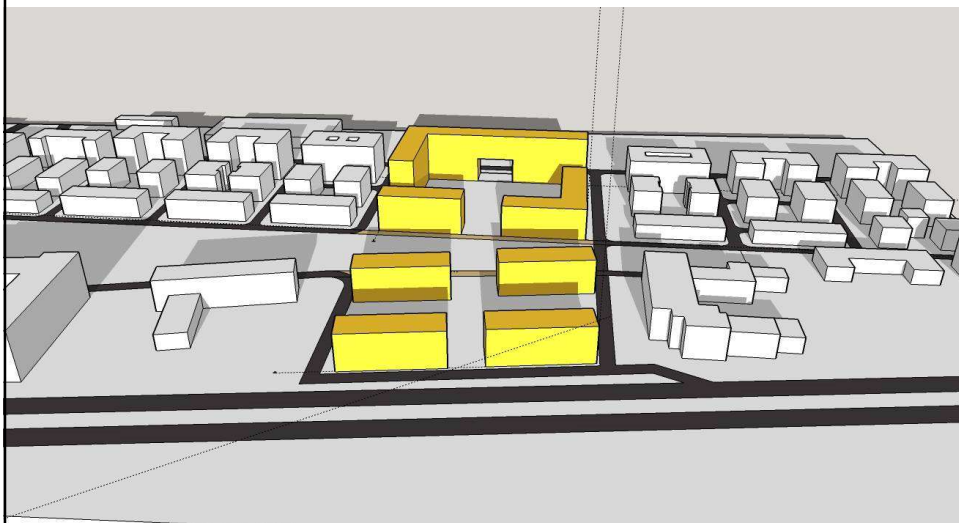
## Sun exposition

9:00



## Sun exposition

12:00



## Sun exposition

15:00

