



European Cooperation in the field of Scientific and Technical Research



Building Integration of Solar Thermal Systems – TU1205 – BISTS

# Modelling of buildings and solar systems with EnergyPlus

Prof. Dr Milorad Bojic  
Faculty of Engineering,  
University of Kragujevac, Serbia  
(milorad.bojic@gmail.com)



COST is supported by  
the EU RTD Framework Programme

ESF provides the COST Office  
through an EC contract



European Cooperation in the field of Scientific and Technical Research



Building Integration of Solar Thermal Systems – TU1205 – BISTS

## Content (75min)

- AA EnergyPlus (15 min)?
- BB How to model Buildings by E+ (30 min)?
- CC How to model Solar systems by E+ (30 min)?



COST is supported by  
the EU RTD Framework Programme

ESF provides the COST Office  
through an EC contract







European Cooperation in the field of Scientific and Technical Research



Building Integration of Solar Thermal Systems – TU1205 – BISTS

# 1 WHAT IS ENERGYPLUS

- EnergyPlus is a building energy simulation program for modeling building heating, cooling, lighting, and ventilation.
- It includes solar collector systems, and photovoltaic systems.



COST is supported by the EU RTD Framework Programme

ESF provides the COST Office through an EC contract

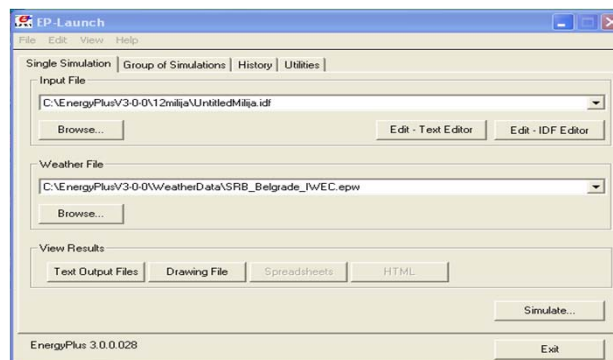


European Cooperation in the field of Scientific and Technical Research



Building Integration of Solar Thermal Systems – TU1205 – BISTS

# 2 Ep-lunch



COST is supported by the EU RTD Framework Programme

ESF provides the COST Office through an EC contract





### 3 DOWNLOAD AND INSTALL EnergyPlus

- Download and install the latest version of EnergyPlus from:  
<http://apps1.eere.energy.gov/buildings/energyplus/register.cfm>
- This is version: 8.1.0.
- The operative system is Windows, Mac, Linux.



### 4 Reads and writes as text files

- It is a stand-alone simulation program without a 'user friendly' graphical interface. It reads input and writes output as text files.

```
Untitled001.txt - Notepad
File Edit Format View Help
!- ===== ALL OBJECTS IN CLASS: VERSION =====
version, 8.0;
!- ===== ALL OBJECTS IN CLASS: BUILDING =====
Building,
  untitled,           !- Name
  0.0,                !- North Axis (deg)
  City,               !- Terrain
  0.0,                !- Loads Convergence Tolerance value
  0.0,                !- Temperature Convergence Tolerance value (deltaC)
  FullInteriorAndExterior, !- Solar Distribution
  25;                 !- Maximum Number of Warmup Days
!- ===== ALL OBJECTS IN CLASS: TIMESTEP =====
Timestep, 4;
!- ===== ALL OBJECTS IN CLASS: SIMULATIONCONTROL =====
SimulationControl,
  No,                  !- Do Zone Sizing Calculation
  No,                  !- Do System Sizing Calculation
  No,                  !- Do Plant Sizing Calculation
  Yes,                 !- Run Simulation for Sizing Periods
  Yes;                 !- Run Simulation for Weather File Run Periods
!- ===== ALL OBJECTS IN CLASS: LOCATION =====
SiteLocation,
  CHICAGO_IL_USA TMY2-94846, !- LocationName
  41.78,                    !- Latitude (deg)
  -87.75,                   !- Longitude (deg)
  -0.0,                     !- Elevation (m)
  190.00;
GlobalGeometryRules,
  UpperLeftCorner,          !- Starting vertex position
  Counterclockwise,        !- Vertex Entry direction
  World;                   !- Coordinate System
!- ===== ALL OBJECTS IN CLASS: MATERIAL =====
Material,
  F08 Metal surface,       !- Name
  Smooth,                  !- Roughness
  0.0098,                  !- Thickness (m)
  45.28,                   !- Conductivity (W/m-K)
  7824;                     !- Density (kg/m3)
```





European Cooperation in the field of Scientific and Technical Research



Building Integration of Solar Thermal Systems – TU1205 – BISTS

## 5 DOCUMENTATION

- For more information on any step please refer to the E+ documentation that comes with the installation.

| name                                 | Ext   | Size      |
|--------------------------------------|-------|-----------|
| [...]                                | <DIR> | <DIR>     |
| [index]                              | <DIR> | <DIR>     |
| Acknowledgments                      | pdf   | 93,91     |
| appguidemenu                         | pdf   | 389,77    |
| AuxiliaryPrograms                    | pdf   | 2,000,75  |
| devguidemenu                         | pdf   | 411,66    |
| EMS_Application_Guide                | pdf   | 856,78    |
| EngineeringReference                 | pdf   | 14,081,53 |
| EPlusMainMenu                        | pdf   | 1,040,98  |
| ExternalInterfaces_Application_Guide | pdf   | 339,34    |
| GettingStarted                       | pdf   | 1,286,22  |
| InputOutputReference                 | pdf   | 17,191,15 |
| InterfaceDeveloper                   | pdf   | 600,17    |
| ModuleDeveloper                      | pdf   | 1,132,21  |
| OutputDetailsAndExamples             | pdf   | 2,092,65  |
| PlantApplicationGuide                | pdf   | 973,98    |
| ProgrammingStandard                  | pdf   | 475,34    |
| Tips_and_Tricks_Using_EnergyPlus     | pdf   | 494,17    |
| Using_EnergyPlus_for_Compliance      | pdf   | 602,53    |



COST is supported by the EU RTD Framework Programme

ESF provides the COST Office through an EC contract



European Cooperation in the field of Scientific and Technical Research



Building Integration of Solar Thermal Systems – TU1205 – BISTS

## 6 Examples

| name                                      | Ext   | Size               | name   | Ext | Size               |
|---|-------|--------------------|--|-----|--------------------|
| [...]                                     | <DIR> | <DIR>              | 5ZoneCoolBeam                                    | idf | 182,445 10/03/2013 |
| [AdvancedOutput]                          | <DIR> | <DIR>              | 5ZoneCoolEst                                     | idf | 206,905 10/03/2013 |
| [BasicFiles]                              | <DIR> | <DIR>              | 5ZoneDDCOnAny                                    | idf | 158,070 10/03/2013 |
| 1ZoneEvapCooler                           | idf   | 28,527 10/03/2013  | 5ZoneDDCOnOne                                    | idf | 158,126 10/03/2013 |
| 1ZoneParameterAspect                      | idf   | 29,660 10/03/2013  | 5ZoneDesignInputCoolingCoil                      | idf | 170,617 10/03/2013 |
| 1ZoneUncontrolled                         | idf   | 19,311 10/03/2013  | 5ZoneDetailedIceStorage                          | idf | 178,854 10/03/2013 |
| 1ZoneUncontrolled_DDO2009                 | idf   | 42,097 10/03/2013  | 5ZoneDetailedIceStorage2                         | idf | 178,979 10/03/2013 |
| 1ZoneUncontrolled_DDOchanges              | idf   | 77,590 10/03/2013  | 5ZoneEconomicsTariffAndLifeCycleCosts            | idf | 255,243 10/03/2013 |
| 1ZoneUncontrolled_FClactor_Slab_UGWall    | idf   | 17,905 10/03/2013  | 5ZoneElectricBaseboard                           | idf | 171,340 10/03/2013 |
| 1ZoneUncontrolled_win_1                   | idf   | 18,569 10/03/2013  | 5ZoneEndUses                                     | idf | 141,570 10/03/2013 |
| 1ZoneUncontrolled_win_2                   | idf   | 19,150 10/03/2013  | 5ZoneEngChill                                    | idf | 171,850 10/03/2013 |
| 1ZoneUncontrolledCondFDWithVariableKat24C | idf   | 20,116 10/03/2013  | 5ZoneFPU   | idf | 177,584 10/03/2013 |
| 1ZoneUncontrolledCoolAlgorithms           | idf   | 34,865 10/03/2013  | 5ZoneGeometryTransform                           | idf | 142,682 10/03/2013 |
| 1ZoneUncontrolledResLayers                | idf   | 18,977 10/03/2013  | 5ZoneIceStorage                                  | idf | 176,074 10/03/2013 |
| 1ZoneWith14ControlledHeat-CoolPanels      | idf   | 31,783 10/03/2013  | 5ZoneNightVent1                                  | idf | 167,014 10/03/2013 |
| 4ZoneWithShading_Simple_1                 | idf   | 58,033 10/03/2013  | 5ZoneNightVent2                                  | idf | 187,787 10/03/2013 |
| 4ZoneWithShading_Simple_2                 | idf   | 56,276 10/03/2013  | 5ZoneNightVent3                                  | idf | 170,443 10/03/2013 |
| 5Zone_Transformer                         | idf   | 169,609 10/03/2013 | 5ZoneReturnFan                                   | idf | 169,708 10/03/2013 |
| 5ZoneAirCooled                            | idf   | 166,566 10/03/2013 | 5ZoneSteamBaseboard                              | idf | 157,073 10/03/2013 |
| 5ZoneAirCooled_UniformLoading             | idf   | 160,902 10/03/2013 | 5ZoneSupResPlenRAB                               | idf | 194,486 10/03/2013 |
| 5ZoneAirCooled_VRP_Sizing                 | idf   | 168,254 10/03/2013 | 5ZoneSupResPlenVSATU                             | idf | 193,936 10/03/2013 |
| 5ZoneAirCooled_VRP_Sizing_MaxZd           | idf   | 168,694 10/03/2013 | 5ZoneTDV   | idf | 219,623 10/03/2013 |
| 5ZoneAirCooledConvCoef                    | idf   | 162,547 10/03/2013 | 5ZoneVAV-ChilledWaterStorage-Mixed               | idf | 297,351 10/03/2013 |
| 5ZoneAirCooledConvCoefFPU                 | idf   | 162,059 10/03/2013 | 5ZoneVAV-ChilledWaterStorage-Mixed_DCV_MaxZd     | idf | 297,084 10/03/2013 |
| 5ZoneAirCooledDemandLimiting              | idf   | 156,235 10/03/2013 | 5ZoneVAV-ChilledWaterStorage-Mixed_DCV_MultiPath | idf | 297,088 10/03/2013 |
| 5ZoneAirCooledWithSlab                    | idf   | 170,310 10/03/2013 | 5ZoneVAV-ChilledWaterStorage-Stratified          | idf | 296,613 10/03/2013 |
| 5ZoneAutoDXVAV                            | idf   | 134,916 10/03/2013 | 5ZoneVAV-Pri-SectLoop                            | idf | 174,980 10/03/2013 |
| 5ZoneBoilerOutsideAirReset                | idf   | 172,552 10/03/2013 | 5ZoneWarmest                                     | idf | 170,568 10/03/2013 |
| 5ZoneBranchSupplyPumps                    | idf   | 161,178 10/03/2013 | 5ZoneWarmestVFD                                  | idf | 171,114 10/03/2013 |
| 5ZoneCAV_MaxTemp                          | idf   | 170,355 10/03/2013 | 5ZoneWarmestVFD_FCMAuto                          | idf | 178,960 10/03/2013 |
| 5ZoneCAVtoVAVWarmestTempFlow              | idf   | 169,958 10/03/2013 | 5ZoneWaterCooled_Baseboard                       | idf | 174,946 10/03/2013 |
| 5ZoneCoolBeam                             | idf   | 182,445 10/03/2013 | 5ZoneWaterCooled_HighRHControl                   | idf | 168,210 10/03/2013 |
| 5ZoneCoolEst                              | idf   | 206,905 10/03/2013 | 5ZoneWaterCooled_MultizoneAverageRHControl       | idf | 172,847 10/03/2013 |


ExampleFiles.xls; ExampleFiles-ObjectsLink.xls




COST is supported by the EU RTD Framework Programme

ESF provides the COST Office through an EC contract






European Cooperation in the field of Scientific and Technical Research



Building Integration of Solar Thermal Systems – TU1205 – BISTS


## 7 SUPPORT GROUPS


- If some unresolved issue will be encountered during work with EnergyPlus, the support group can be found in [http://tech.groups.yahoo.com/group/EnergyPlus\\_Support/](http://tech.groups.yahoo.com/group/EnergyPlus_Support/) and <http://energyplus.helpserve.com/>.




COST is supported by the EU RTD Framework Programme

ESF provides the COST Office through an EC contract





European Cooperation in the field of Scientific and Technical Research



Building Integration of Solar Thermal Systems – TU1205 – BISTS


## 8. Weather data

**View Weather Data**

Select a region below to view weather data.


- [Africa](#) (WMO Region 1)
- [Asia](#) (WMO Region 2)
- [South America](#) (WMO Region 3)
- [North and Central America](#) (WMO Region 4)
- [Southwest Pacific](#) (WMO Region 5)
- [Europe](#) (WMO Region 6)

- It includes time steps of less than an hour
- Weather data for more than 2100 locations are now available in EnergyPlus weather format — 1042 locations in the USA, 71 locations in Canada, and more than 1000 locations in 100 other countries throughout the world.
- [http://apps1.eere.energy.gov/buildings/energyplus/weathdata\\_about.cfm](http://apps1.eere.energy.gov/buildings/energyplus/weathdata_about.cfm)
- Meteonorm\_Weather\_Files
- [https://groups.yahoo.com/neo/groups/EnergyPlus\\_Support/files/Meteonorm\\_Weather\\_Files/](https://groups.yahoo.com/neo/groups/EnergyPlus_Support/files/Meteonorm_Weather_Files/)



COST is supported by the EU RTD Framework Programme

ESF provides the COST Office through an EC contract





European Cooperation in the field of Scientific and Technical Research



Building Integration of Solar Thermal Systems – TU1205 – BISTS

## 9. Different versions

Windows - Programs for converting older version IDF files to current (or intermediate) versions

- <http://energyplus.helpserve.com/Knowledgebase/Article/View/86/47/windows---programs-for-converting-older-version-idf-files-to-current-or-intermediate-versions>



COST is supported by the EU RTD Framework Programme

ESF provides the COST Office through an EC contract



European Cooperation in the field of Scientific and Technical Research



Building Integration of Solar Thermal Systems – TU1205 – BISTS

## 10. Testing and Validation




- [http://apps1.eere.energy.gov/buildings/energyplus/energyplus\\_testing.cfm](http://apps1.eere.energy.gov/buildings/energyplus/energyplus_testing.cfm)



COST is supported by the EU RTD Framework Programme


ESF provides the COST Office through an EC contract






Building Integration of Solar Thermal Systems – TU1205 – BISTS




## AA2 PROVIDING INFORMATION TO E+



COST is supported by the EU RTD Framework Programme

ESF provides the COST Office through an EC contract






Building Integration of Solar Thermal Systems – TU1205 – BISTS


## 1 EDITING (idf files)

- The input file (\*.idf) can be created or edited
- either by using a user interface ( IDF Editor) which comes with EnergyPlus installation,
- or in a simple text editor (like as notepad),
- or by using OpenStudio that goes with Google Sketch-up.



COST is supported by the EU RTD Framework Programme

ESF provides the COST Office through an EC contract







European Cooperation in the field of Scientific and Technical Research



Building Integration of Solar Thermal Systems – TU1205 – BISTS

## 2 IDF EDITOR

For users who want a simple way of creating or editing EnergyPlus input data files (IDF), IDF Editor provides this service. Any EnergyPlus object may be viewed and edited using a spreadsheet-like grid.



COST is supported by  
the EU RTD Framework Programme

ESF provides the COST Office  
through an EC contract

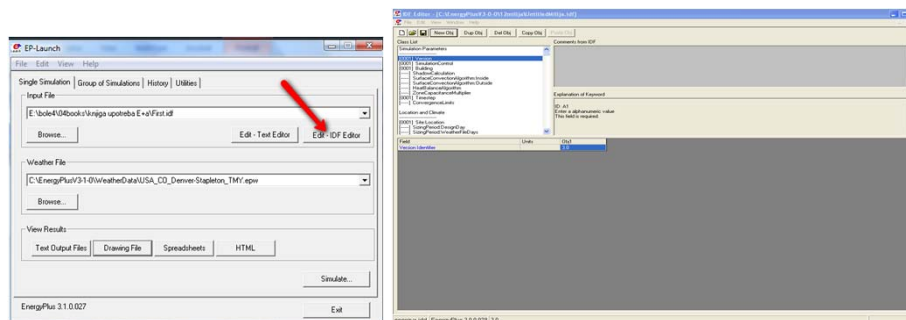


European Cooperation in the field of Scientific and Technical Research



Building Integration of Solar Thermal Systems – TU1205 – BISTS

## 3 IDF file inside the IDF Editor



- You can take a look into IDF editor and explore basic things that you input into editor.



COST is supported by  
the EU RTD Framework Programme

ESF provides the COST Office  
through an EC contract





European Cooperation in the field of Scientific and Technical Research



Building Integration of Solar Thermal Systems – TU1205 – BISTS

## 4 IDF EDITOR -list

For inputs with several options, a list is provided. When a numeric input has a range of valid values, those values are displayed. It also automatically provides a list of object names when an object needs to be linked to another. By displaying all objects of the same kind next to each other in a grid, it is easy to see how inputs are different across the building



COST is supported by the EU RTD Framework Programme

ESF provides the COST Office through an EC contract



European Cooperation in the field of Scientific and Technical Research



Building Integration of Solar Thermal Systems – TU1205 – BISTS

## 5 IDF EDITOR –comments and validity

The IDF Editor outputs an EnergyPlus input file with proper syntax and comments to help the user understand the input values. In addition, the IDF Editor converts standard inch-pound units into SI units compatible with EnergyPlus.

- The IDF Editor does not check inputs for validity, although some numeric fields are highlighted if out of range.



COST is supported by the EU RTD Framework Programme

ESF provides the COST Office through an EC contract





European Cooperation in the field of Scientific and Technical Research



Building Integration of Solar Thermal Systems – TU1205 – BISTS

## 6 Text EDITOR of the IDF file

- If you would like to correct EnergyPlus code by using text, start „edit text editor“ button of „input file“ of Energyplus.



COST is supported by  
the EU RTD Framework Programme

ESF provides the COST Office  
through an EC contract

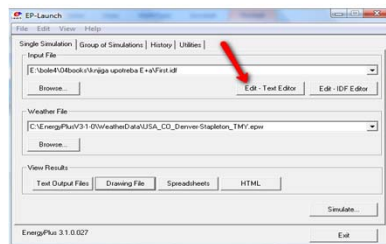


European Cooperation in the field of Scientific and Technical Research



Building Integration of Solar Thermal Systems – TU1205 – BISTS

## 7 IDF file inside the text EDITOR



```
Untitled001jja - Notepad
File Edit Format View Help
----- ALL OBJECTS IN CLASS: VERSION -----
Version, 3.0;
----- ALL OBJECTS IN CLASS: BUILDING -----
Building, untitled,
    Name,
    0.0,
    City,
    0.0,
    Terrain,
    0.0,
    Load Convergence Tolerance Value (deltaC),
    0.0,
    Temperature Convergence Tolerance Value (deltaT),
    25;
----- ALL OBJECTS IN CLASS: TIMESTEP -----
Timestep, 4;
----- ALL OBJECTS IN CLASS: SIMULATIONCONTROL -----
SimulationControl,
    NO,
    NO,
    YES,
    YES;
----- ALL OBJECTS IN CLASS: LOCATION -----
Site, location,
    CHICAGO_IL_USA_TMY2-94846,
    41.78,
    -87.75,
    190.00;
GlobalGeometryRules,
    upperLeftCorner,
    counterclockwise,
    world;
----- ALL OBJECTS IN CLASS: MATERIAL -----
Material,
    F08 Metal surface,
    Smooth,
    0.0098,
    7824;
    Name,
    Roughness,
    Thickness (m),
    Conductivity (w/m-k),
    Density (kg/m3)
```



COST is supported by  
the EU RTD Framework Programme

ESF provides the COST Office  
through an EC contract





European Cooperation in the field of Scientific and Technical Research



Building Integration of Solar Thermal Systems – TU1205 – BISTS

## 8 OpenStudio with Google Legacy Sketch-up

- Google Sketch-up.  
<http://www.sketchup.com/products/sketchup-make>
- **Legacy OpenStudio Plug-in for SketchUp**  
<http://apps1.eere.energy.gov/buildings/energyplus/openstudio.cfm>



COST is supported by  
the EU RTD Framework Programme

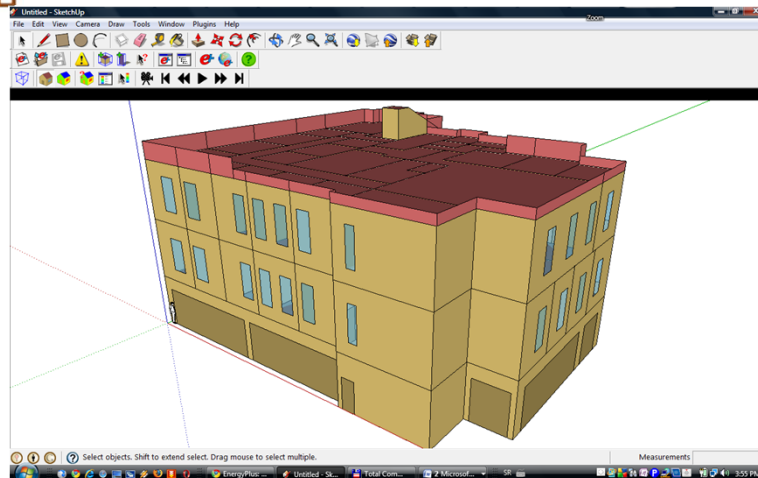
ESF provides the COST Office  
through an EC contract



European Cooperation in the field of Scientific and Technical Research



Building Integration of Solar Thermal Systems – TU1205 – BISTS




Building geometry provided by OpenStudio for EnergyPlus




COST is supported by  
the EU RTD Framework Programme

ESF provides the COST Office  
through an EC contract






European Cooperation in the field of Scientific and Technical Research




**Building Integration of Solar Thermal Systems – TU1205 – BISTS**


# AA3 RUNING SIMULATION




COST is supported by the EU RTD Framework Programme

ESF provides the COST Office through an EC contract



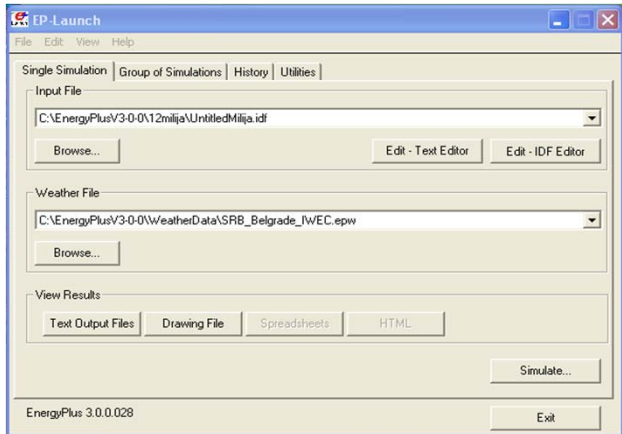



European Cooperation in the field of Scientific and Technical Research



**Building Integration of Solar Thermal Systems – TU1205 – BISTS**


# 1 Start Ep-lunch



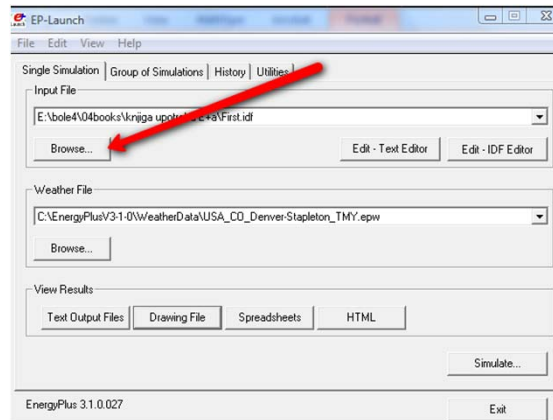


COST is supported by the EU RTD Framework Programme

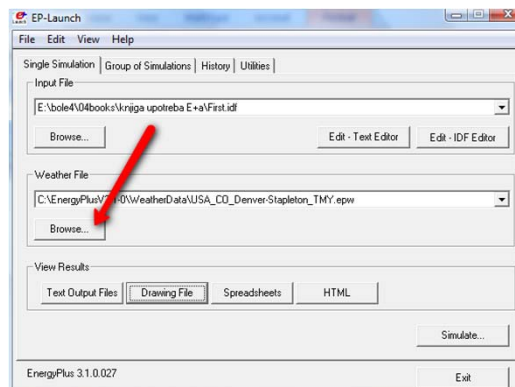
ESF provides the COST Office through an EC contract



## 2 Find an input file (First.idf)



## 3 Find a weather file (USA\_CO\_DenverStapleton\_TMY.epw)



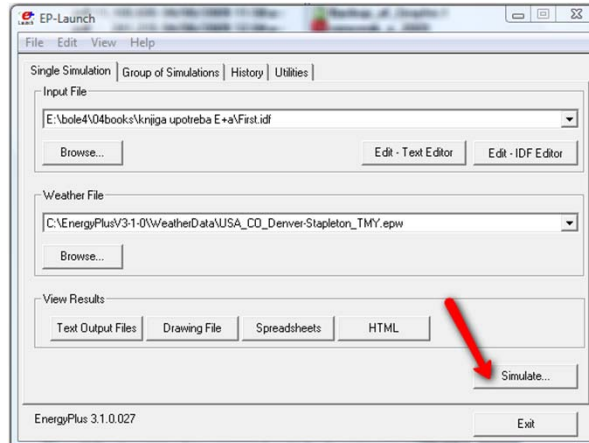


European Cooperation in the field of Scientific and Technical Research



Building Integration of Solar Thermal Systems – TU1205 – BISTS

## 4 Start a simulation and wait EnergyPlus to finish this simulation.



COST is supported by  
the EU RTD Framework Programme

ESF provides the COST Office  
through an EC contract

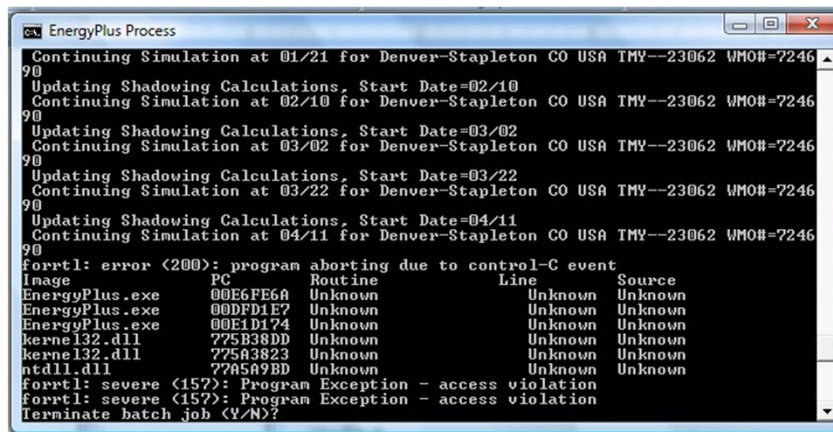


European Cooperation in the field of Scientific and Technical Research



Building Integration of Solar Thermal Systems – TU1205 – BISTS

## 5 Simulation Run

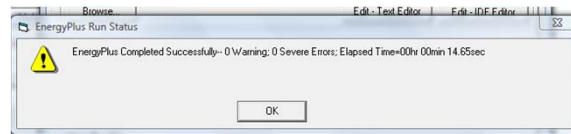


COST is supported by  
the EU RTD Framework Programme

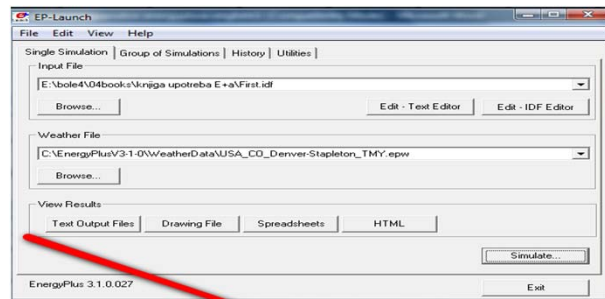
ESF provides the COST Office  
through an EC contract



## 6 Run Status



## 7 Quick open panel for single simulation

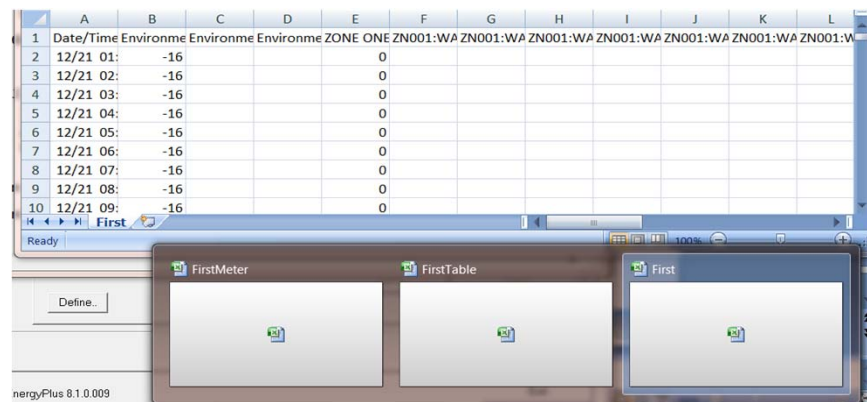




## 8.1 Text output files




## 8.2 Spreadsheets




|    | A         | B         | C         | D         | E    | F   | G        | H        | I        | J        | K        | L        |
|----|-----------|-----------|-----------|-----------|------|-----|----------|----------|----------|----------|----------|----------|
| 1  | Date/Time | Environme | Environme | Environme | ZONE | ONE | ZN001:WA | ZN001:WA | ZN001:WA | ZN001:WA | ZN001:WA | ZN001:WA |
| 2  | 12/21 01: | -16       |           |           |      | 0   |          |          |          |          |          |          |
| 3  | 12/21 02: | -16       |           |           |      | 0   |          |          |          |          |          |          |
| 4  | 12/21 03: | -16       |           |           |      | 0   |          |          |          |          |          |          |
| 5  | 12/21 04: | -16       |           |           |      | 0   |          |          |          |          |          |          |
| 6  | 12/21 05: | -16       |           |           |      | 0   |          |          |          |          |          |          |
| 7  | 12/21 06: | -16       |           |           |      | 0   |          |          |          |          |          |          |
| 8  | 12/21 07: | -16       |           |           |      | 0   |          |          |          |          |          |          |
| 9  | 12/21 08: | -16       |           |           |      | 0   |          |          |          |          |          |          |
| 10 | 12/21 09: | -16       |           |           |      | 0   |          |          |          |          |          |          |

energyPlus 8.1.0.009



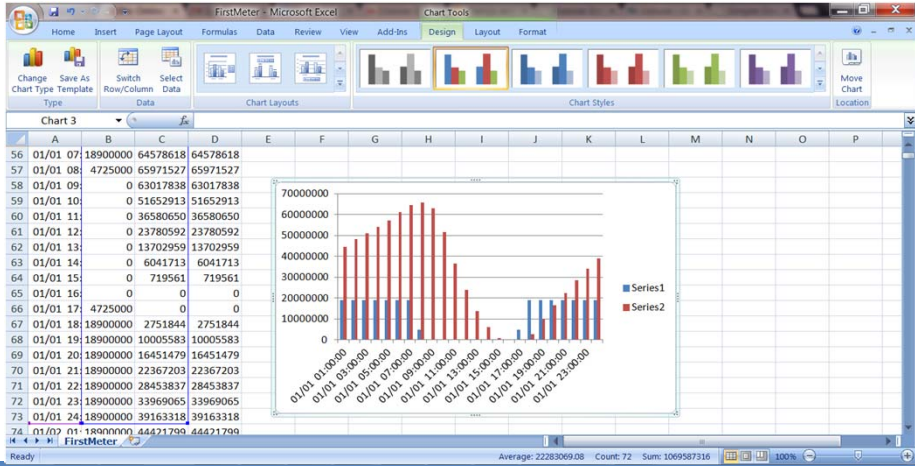
European Cooperation in the field of Scientific and Technical Research


**Building Integration of Solar Thermal Systems – TU1205 – BIST**



www.cost.esf.org


## 8.2 Spreadsheets and charts






COST is supported by  
the EU RTD Framework Programme


ESF provides the COST Office  
through an EC contract





European Cooperation in the field of Scientific and Technical Research

**Building Integration of Solar Thermal Systems – TU1205 – BIST**




www.cost.esf.org

## 8.3 HTLM output content


**Table of Contents**


- [Top](#)
- [Annual Building Utility Performance Summary](#)
- [Input Verification and Results Summary](#)
- [Demand End Use Components Summary](#)
- [Source Energy End Use Components Summary](#)
- [Component Sizing Summary](#)
- [Surface Shadowing Summary](#)
- [Climatic Data Summary](#)
- [Envelope Summary](#)
- [Shading Summary](#)
- [Lighting Summary](#)
- [Equipment Summary](#)
- [HVAC Sizing Summary](#)
- [System Summary](#)
- [Outdoor Air Summary](#)
- [Object Count Summary](#)
- [Energy Meters](#)
- [Sensible Heat Gain Summary](#)
- [LEED Summary](#)



COST is supported by  
the EU RTD Framework Programme


ESF provides the COST Office  
through an EC contract





European Cooperation in the field of Scientific and Technical Research

**Building Integration of Solar Thermal Systems – TU1205 – BISTS**



## 8.3 HTLM output Annual Building Utility Performance Summary

Program Version: EnergyPlus-Windows-64 8.1.0.009, YMD=2014.08.17 12:52

Tabular Output Report in Format: HTML

Building: Simple One Zone (Wireframe DXF)

Environment: San Francisco Intl Ap CA USA TMY3 WMO#724940

Simulation Timestamp: 2014-08-17 12:52:12

Report: Annual Building Utility Performance Summary


For: Entire Facility

Timestamp: 2014-08-17 12:52:12

Values gathered over 8760.00 hours


**Site and Source Energy**


|                     | Total Energy [GJ] | Energy Per Total Building Area [MJ/m <sup>2</sup> ] | Energy Per Conditioned Building Area [MJ/m <sup>2</sup> ] |
|---------------------|-------------------|---|---|
| Total Site Energy   | 258.96            | 1114.98   | 1114.98   |
| Net Site Energy     | 258.96            | 1114.98   | 1114.98   |
| Total Source Energy | 846.32            | 3643.87   | 3643.87   |
| Net Source Energy   | 846.32            | 3643.87   | 3643.87   |



COST is supported by  
the EU RTD Framework Programme


ESF provides the COST Office  
through an EC contract





European Cooperation in the field of Scientific and Technical Research

**Building Integration of Solar Thermal Systems – TU1205 – BISTS**



## 8 Err file

First - Notepad

File Edit Format View Help

Program Version: EnergyPlus 3.1.0.027, 8/28/2009 11:22 AM, IDO\_Version 3.1.0.027

\*\*\*\*\* Output:PreprocessorMessage="No Preprocessor Used" has the following information messages:

\*\*\*\*\* Illustrative Message

\*\*\*\*\* No problems for processing

\*\*\*\*\* Testing individual branch integrity

\*\*\*\*\* All branches passed integrity testing

\*\*\*\*\* Testing individual supply air path integrity


\*\*\*\*\* All supply air paths passed integrity testing

\*\*\*\*\* Testing individual return air path integrity

\*\*\*\*\* All return air paths passed integrity testing

\*\*\*\*\* No node connection errors were found.

\*\*\*\*\* EnergyPlus completed successfully-- 0 warnings; 0 severe errors; Elapsed Time=00hr 00min 14.65sec



COST is supported by  
the EU RTD Framework Programme

ESF provides the COST Office  
through an EC contract

